

Pathology Queensland

Performance Reporting Dashboard

Pathology Queensland

Presenter: Matt Ford

matt.ford@health.qld.gov.au

0407780270

PPA National Forum, Innovations Plenary
Tasmania 2023

Aim of this Innovation



Provide real time, reliable and trusted metrics for Pathology Queensland Lab Managers and our Hospital Clinical teams to manage and monitor laboratory performance and workload.

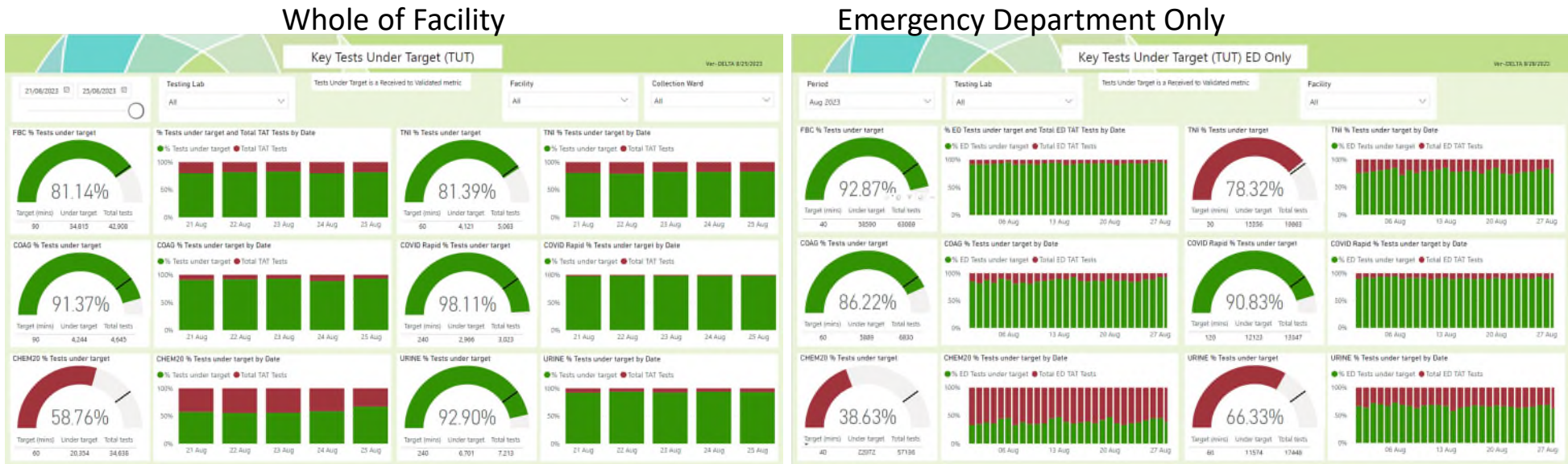
With no easy and readily available access to real time laboratory analytical information, for ACHS Reporting and workload information prompted PQ to undertake the project to provide the newly formed QPHaSS Board with monthly performance metrics across all 35 Labs in Pathology Queensland

We are seeking to provide and support the ability for Lab Manager to make decisions based on current, accurate and reliable information from the Laboratory Information System – AUSLAB

Key Changes Implemented



Used Power BI Technology to create a new dashboard extracted from AUSLAB in real time.



Community First, Always.

ACHS Key Tests Under Target (TUT) ED Only

Ver-DELTA 9/21/2023

Period

Sep 2023

Testing Lab

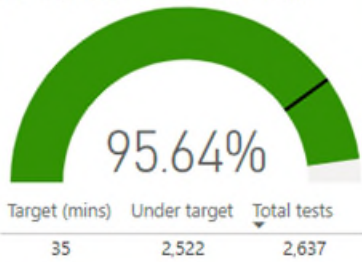
Cairns

Tests Under Target is a Received to Validated metric

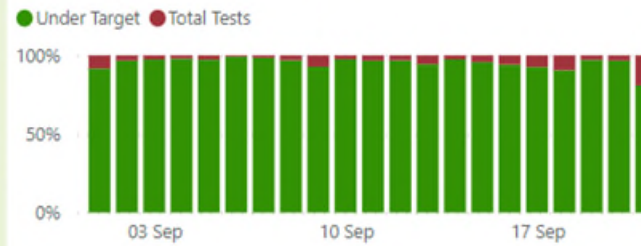
Facility

All

Haemoglobin % Tests under target



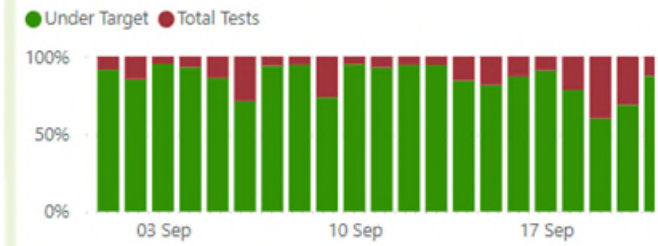
Haemoglobin % Tests under target by Date



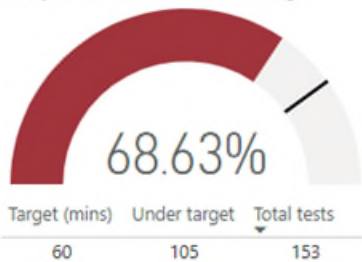
Troponin % Tests under target



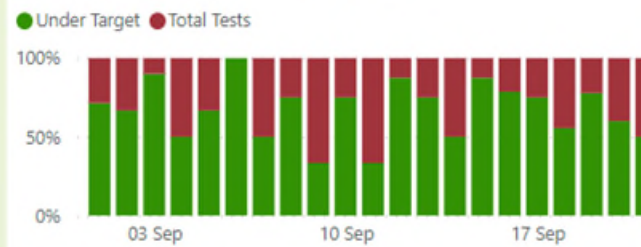
Troponin % Tests under target by Date



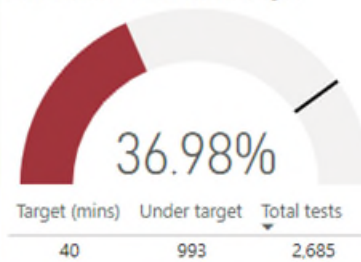
Group & Hold % Tests under target



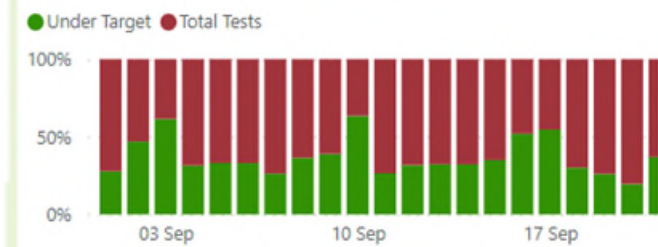
Group & Hold % Tests under target by Date



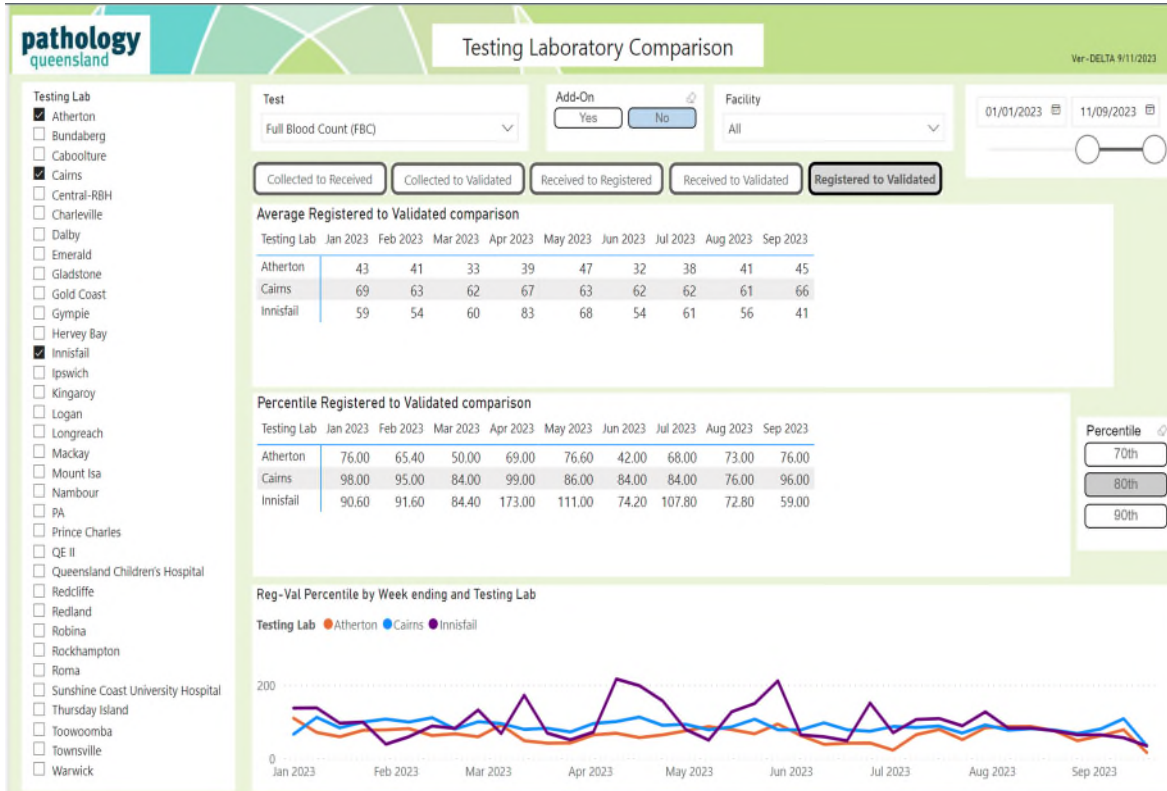
Potassium % Tests under target



Potassium % Tests under target by Date



Outcomes so Far – Real time Lab Comparisons



Nambour



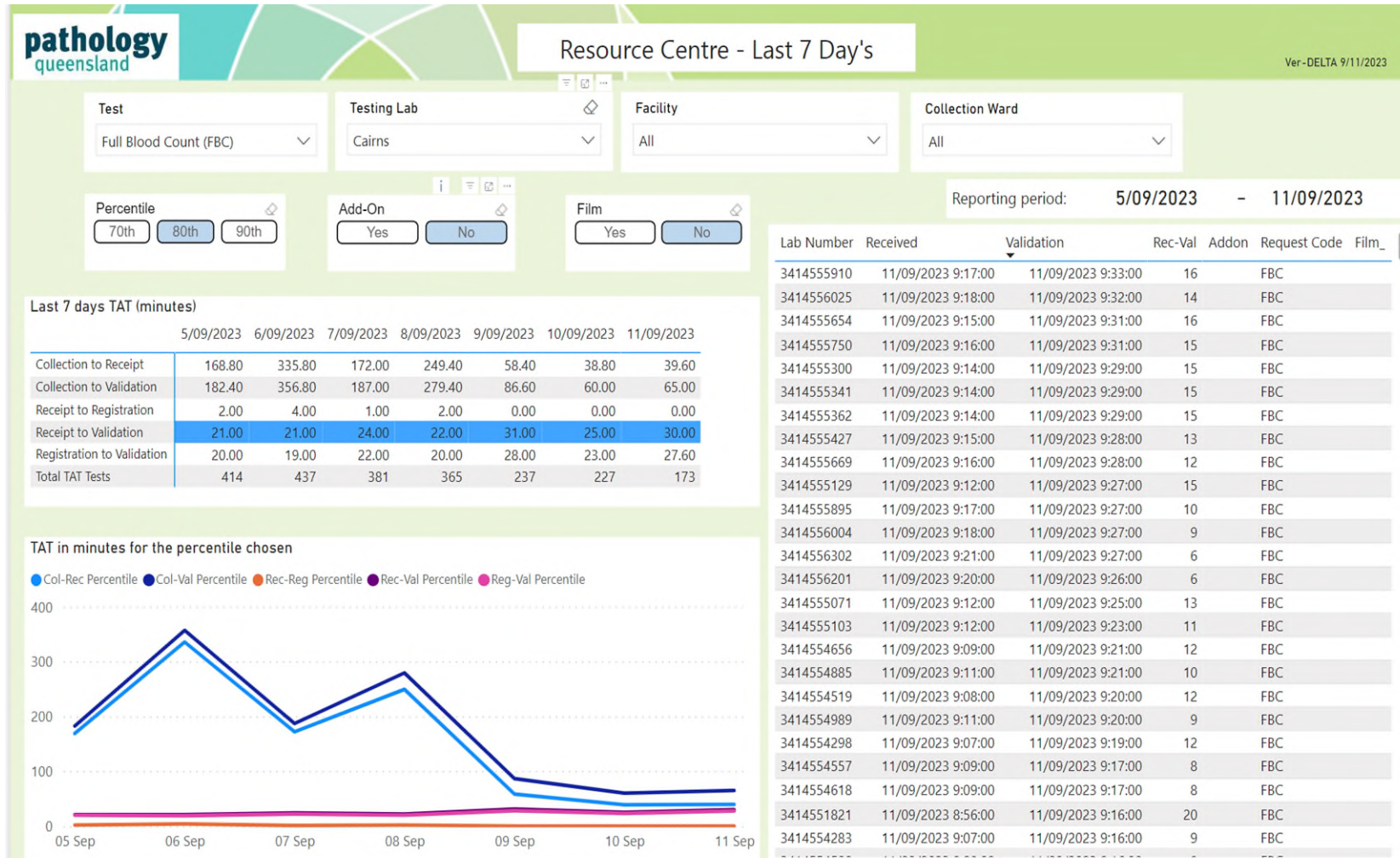
QE2



Ipswich



Real Time TAT's for each lab for key performance tests



Pathology Queensland



Problem: *Performance Analytics from AUSLAB, a very old and technology challenged system to extract accurate information from.*

Solution: *Small IT team and using the Power BI Technology Platform.*

Results: *A real time, accurate and reliable Power BI Portal for Laboratory Metrics and future benchmarking.*

Microsoft Power BI is a business intelligence (BI) platform that provides nontechnical business users with advanced tools for aggregating, analysing, visualizing and sharing data.